



artureon

ABSOLUTE DURABLE.
WATERPROOF.

Art by Nature

INSTALLATION GUIDE
Glue down installation



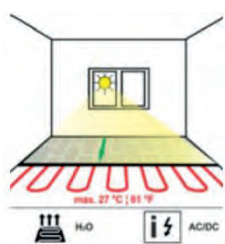
Suitable subfloors

An Artureon floor can be installed on professionally installed underlays. These include: Cement and calcium sulphate screeds, calcium sulphate flow screeds. For bonding on old substrates, please contact the application department of your adhesive manufacturer.

Existing resilient and textile floor coverings are not suitable underlays and must be removed completely. The subfloors must meet the requirements for installation (evenness surface strength, absence of cracks, cleanliness, dryness, etc.) and must be tested before installation. It is important that the substrate does not have any unevenness of $\geq 1 \text{ mm}/10 \text{ cm}$ or $\geq 3 \text{ mm}/1 \text{ m}$. Substrate pre-treatment may be necessary. Please observe the corresponding specifications of the adhesive manufacturer

Construction expansion joints or functional joints must always be adopted into the top layer. Depending on the room size and geometry, additional expansion joints may also be necessary.

Artureon floors are suitable for installation on underfloor heating. The rules of installation must be observed with particular care.



Maximum moisture values	manufacturer's specification
Cement screeds	2.3 % 1.5 %*
Calcium sulphate screeds	0.5 % 0.3 %*

* Values with underfloor heating



Installation

Adhesive application: Apply adhesive with suitable toothed spatula according to the adhesive manufacturer's instructions. Only precoat as much as can be laid during the pot time of the adhesive. Particular care must be taken to ensure that the adhesive is applied with equal mass. Do not apply too much adhesive (e.g. to compensate for unevenness). Marking additional reference lines is advantageous for accurate pre-application.

Approved adhesive

We have had the Artureon floor tested with various adhesive manufacturers.

You will find the details below. For all questions regarding glue and substrate preparation, please contact the glue manufacturer.

SUPPLIER	ADHESIVE
Sika Schweiz AG	SikaBond® 700 Parquet Premium
	SikaBond® 600 Parquet Rapid
Sika Deutschland GmbH	Schönox® Parkett 600
Mapei GmbH	Ultrabond Eco S968 1K
	Ultrabond Eco S958 1K
	Ultrabond Eco S940 1K
	Ultrabond Eco MS 4 LVT Wall
Kiesel Bauchemie GmbH & Co. KG	BakIt HPK
	BakIt EK new
	BakIt PU-P
Bostik GmbH	Stix A540 Multi Plus
	Stix A550 Power Elastic
Wakol GmbH	WAKOL® MS 260 Parquet adhesive
	WAKOL® MS 230 Parquet adhesive
	WAKOL® PU 225 Parquet adhesive
	WAKOL® PU 216 Parquet adhesive
	WAKOL® PU 210 Parquet adhesive

Observe the processing and safety instructions of the adhesive manufacturer

Tips

Ensure good lighting in the work area. Remove all existing trim strips. Check the movement clearance of door leaves and make any necessary adjustments before the floor is laid. Leave an expansion gap of at least 5 mm to walls and all at least 5 mm expansion gap.

Entrance mats (dry run mats)

All type of floors must be protected from coarse dirt and water/snow by suitable clean-off zones. For this reason, entrance areas must be equipped with a sufficiently dimensioned clean-off zone / door mat.

IMPORTANT NOTICE

Every application, every installation job is different; therefore, we strongly recommend that the customer consult a qualified flooring installer or service provider to verify that conditions and application meet local requirements or professional expectations. Our installation guidelines are not intended to supersede any federal, state or local regulations that may require a change in current installation methods, materials or structural components. The builder is responsible for compliance with all building codes, including maintaining the required distance from heat sources, such as fireplaces.



SAFETY NOTICE: WEAR SAFETY GLASSES AND GLOVES WHEN CUTTING THIS PRODUCT. WOOD DUST MAY BE GENERATED DURING CUTTING. ENSURE GOOD VENTILATION.



RESPONSIBILITY OF THE BUILDER/FLOOR INSTALLER

The builder/floor installer must inspect the flooring for defects before installation and during installation. No boards shall be installed that have an obvious defect.

The builder/floor installer is responsible for ensuring that the structural design of the installation site complies with local building codes. The builder/floor installer is responsible for problems in the flooring due to the subfloor, substrate, structural damage or defects after the flooring is installed.

CONDITION OF THE CONSTRUCTION SITE

The manufacturer is not liable for situations resulting from improper installation or poor site conditions. Pouring of foundation concrete floors, drywall and plastering work, plumbing work, etc., must be completed with sufficient time clearance from the installation work. Normal living conditions must prevail at the construction site, i.e. a room temperature of more than 18°C and a relative humidity of less than 70%.



WET AREAS

The product must not be installed in wet rooms, such as saunas, near swimming pools and other similar areas with a high degree of wetness.



ACCLIMATISATION

Acclimatisation of at least 24 hours in residential areas and 48 hours in commercial areas is required prior to installation.

TOOLS

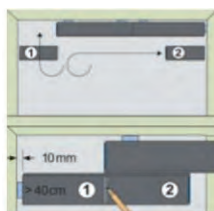
- Saw
- Toothed spatula
- Measuring stick and pencil
- Straight edge or plumb line
- Spacers
- Wiping cloth



Remove the tongue on the panels that adjoin the walls to make room for spacers.



Do not hit end joints with tapping block and hammer. Simply push the end down to engage.



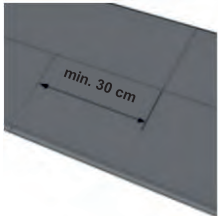
To measure and cut the last piece in a row, turn the cut section 180°, mark it accordingly, cut it, turn it back 180° and insert it into place.



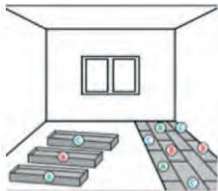
Leave an expansion joint of 5 mm along the perimeter of the floor and around vertical structures. The smallest usable piece must have a length of 40 cm.



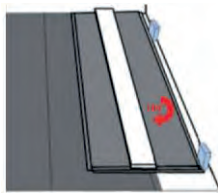
First place the board on the long side and then fold it down on the profile of the short side.



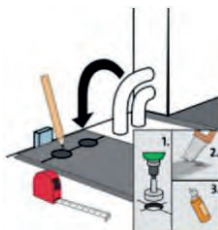
Stagger end joints, but avoid a stair-like appearance by varying the spacing between adjacent rows. The minimum offset is 30 cm.



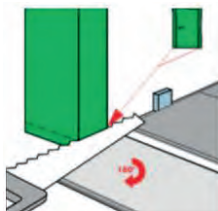
Mix batches to reduce repetition of panels and ensure the best look.



Cut the last row to fit. (minimum width 50 mm). Before cutting boards for the first and last row, remove the 5G plastic spring. Cut the 5G plastic spring to fit and replace it.



Make sure there is an expansion gap of 5 mm around fixed objects.



If possible, start installing panels under the door jamb and finish installing boards on a wall without a door jamb. Undercut the jambs as shown.



Finish installing the floor tiles with a skirting board of your choice to cover the expansion joints. The skirting board must be fixed to the wall. It must